



# KAITAO INTERMEDIATE SCHOOL

TE KURA TAKAWAENGA O KAITAO ROTOHOKAHOKA



**Kaitao Panui!**  
Bringing School News Home To You

**4th June 2020**

Bell Road  
P O Box 8003  
Western Heights  
Rotorua 3015

Principal:  
Mr Phil Palfrey QSM  
principal@kaitao.school.nz

Phone: 07 348 3687  
Email: [office@kaitao.school.nz](mailto:office@kaitao.school.nz)  
[www.kaitao.school.nz](http://www.kaitao.school.nz)

# The Kaitao Panui



## Your Fortnightly News Update From the Principal's Desk

Kia ora Koutou,

It appears that Alert Level 1 is on the horizon for next week but we will continue to ensure health and safety measures take place in our school. We would think that for the small number of students remaining at home this is a great time to come back to the school site to learn.

As you will have seen in our email this week, we're making some changes to the way we operate at Kaitao. COVID-19 has provided the opportunity for us to do things slightly differently where we think it will improve the ongoing hauora of our wider school community.

The three key changes are:

- Keeping the school gates closed permanently to improve safety
- Making appointments to talk to teachers or staff
- Finishing earlier on Tuesdays for staff professional development

You can find out more about these changes through our App but I want to reinforce that we still actively encourage our parents, whānau and caregivers to be involved with their children's education. Our wider school whānau plays a crucial in the success of our students. By making an appointment, we can make sure the staff member you want to speak to is available, while it also helps keep our school community safe as we know who is on the grounds at any time.

Finishing school an hour early on Tuesdays will allow our teaching team dedicated and consistent professional development – and our tamariki will benefit immensely from that as a result. There will be supervision on site for those who need their tamariki to stay until 3pm, or those who catch the bus.

As always, please get in touch if you have any questions or concerns. Ka nui te mihi for your ongoing support.

Phil Palfrey QSM - Principal

Debbie Holmes - Deputy Principal

Be the **first** to get the latest school news this **WINTER**  
With our school app!



**Simple free download:**  
In Google play & App Store search  
'Skool Loop' & choose our school  
once installed

- \* Events \* Notices \* Newsletters
- \* Cancellations \* Permission slips
- \* Parent Teacher Interviews
- \* Instant notifications \* Absentees

# Term 2

<b>1st June</b>	Week 8 Queens Birthday Newsletter Week - Room 6 & 7
<b>8th June</b>	Week 9
<b>9th-11th June</b>	Maths
<b>11th June</b>	Immunising for Y7 Boostrix
<b>15th June</b>	Week 10 Newsletter Week - Room 8
<b>22nd June</b>	Week 11
<b>26th June</b>	Photo Life Day
<b>29th June</b>	Week 12 Newsletter Week - Team Moana
<b>3rd July</b>	Last day of Term 2 Mid Year Reports to go home

Keep up to date with the latest happenings at

[www.kaitao.school.nz](http://www.kaitao.school.nz)



## Weekly Awards

### Academic Award

Josaiah Hema	Jayah Marsters
Natalia Graham-McRae	Laval Wilson
Brandon Parkes	Max Porteous
Jacob Keen	Preston Hamilton
Deegan Edwards	George Deane
GuanXu Chen	Violet Wilson
Te Waiora Waiariki	Ella Hudson
Jazmin Bott	Shawn Burnett
Ella Douglas	Sophie Steiner
Laurel Khan-Kelly	Ella Begley
Hunta-Jay Thompson	Kelly Kereama
Claudia McPhee	

### Citizenship Award

Jayda Gibbons	Atelea Walters
Maia-Lee Low-Hornfeck	Lukas Clarke
Kae'Jahun Tuhoro	Te Manawa Ransfield
Rylee Lee Chee	Morgan De Thierry
Siane Kora-Kouka	Reikura Roberts
Mere Snow	Nyveah Smith-Rogers
Laval Wilson	Khyrah-James Taoho

### Cultural Award

Logan Ohlson	Oshean Karaha
Jaydah Gerrard-Thompson	Naitarah Hunia
Te Ana Tahuri	Arikihana Munro
Dylan Hancock	Abby Keen
Shawn Burnett	Nyveah Smith-Rogers
Talia Pari-Samson	Alyssa Mansner

# Room 6 Newsletter

**A**mbitious

**R**esponsible

**O**pen

**H**ard - working

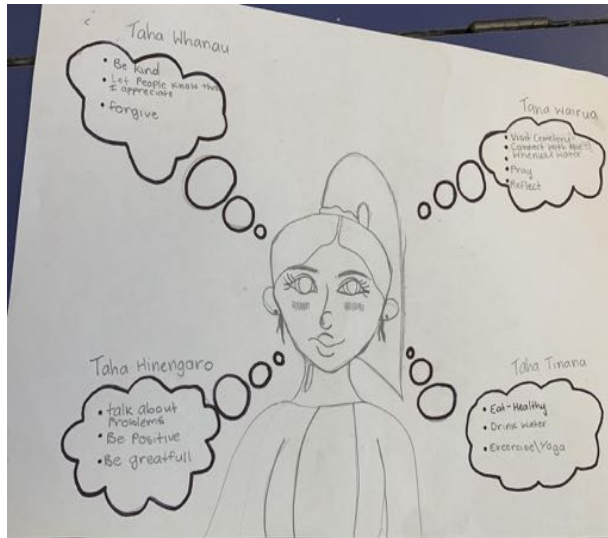
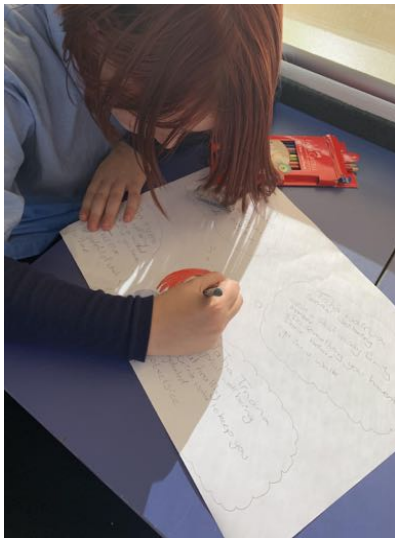
**A**ffable

Room 6 celebrated Mother's Day by making our mothers cards and crafts. We also wrote them acrostic poems.

This is an acrostic poem written by Naitarah Hunia for her wonderful mum, Aroha.

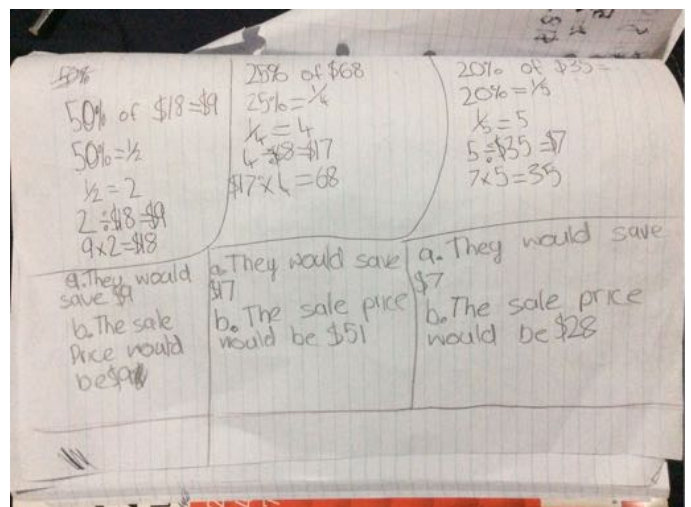


John's mother Angie really enjoyed her mother's day. John made these amazing flowers out of ribbon.



Since returning to school the students have been learning about hauora (Te Whare Tapa Wha) and how they can look after their wellbeing.

### ROOM 7 - Distance Learning



# Cultural Electives

HARAKEKE



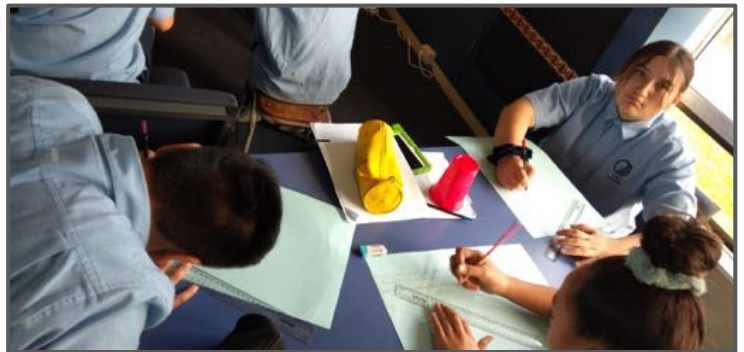
CHOIR



KNITTING



PASIFIKA ART



CHESS



Tēnā koutou,

Our school has decided to participate in a strengths-based research project about how students learn, succeed and thrive at school. This project is being conducted by Dr Melinda Webber from the University of Auckland and has been funded by the Royal Society of New Zealand, Te Apārangi. Our school would like to invite you and your school aged child/ren to take part in this important research project by completing short questionnaires – either online or in hardcopy.

Completing this survey will help our school to find out more about how our students develop positive attitudes, engagement and aspirations towards school, and who their role-models for success are. Overall the questionnaires will help us to better understand the personal, teacher, whānau and community factors that positively impact our students learning and success at school.

This study involves you:

- Completing a questionnaire about your child's attitude, engagement at school and their future aspirations. It also asks you to nominate and describe a family, tribal or local role-model for your child.
- Giving permission for your child to also complete a questionnaire at school about their attitude, engagement at school and their future aspirations.

Each questionnaire should take between 15-30 minutes to complete. If you agree to participate please complete the hardcopy questionnaire and return it to the school office in the sealed self-addressed envelope which will be attached. Alternatively, you can complete the survey online by logging onto the following Qualtrics link. [https://auckland.au1.qualtrics.com/jfe/form/SV\\_8FWVPKvHOHmYKTb](https://auckland.au1.qualtrics.com/jfe/form/SV_8FWVPKvHOHmYKTb)

If you do not wish to participate, please return the questionnaire to the school office. There is a box labelled "*The learning, succeeding, and thriving in education project*" where your child can put the complete/incomplete questionnaires.

Should you agree to your child's participation, please discuss the project with them. They will complete the questionnaire during school hours in a way that causes the least amount of disruption to their learning. Your child may ask for a support person/teacher to help them complete the questionnaire if they wish.

If you do not consent for your child to participate in this research project, please sign the form below and return to your child's school as soon as possible. Your child will be provided with other school work to do while the class completes the questionnaire.

Ngā mihi mahana ki a koutou ko tō whānau. Thank you for taking the time to consider this research.

Nāku iti nei,

Dr Melinda Webber, (Ngāti Whakaue, Ngāpuhi, Ngāti Kahu)

*Rutherford Discovery Fellow, MRSNZ*

*Associate Professor - Te Puna Wānanga/School of Māori and Indigenous Education*

Email: [m.webber@auckland.ac.nz](mailto:m.webber@auckland.ac.nz)

---

I do not give permission for my child to participate in this research project

Name: \_\_\_\_\_

Child's name and Room Number: \_\_\_\_\_

Signature: \_\_\_\_\_

Date: \_\_\_\_\_

# Looking to Buy or sell Real Estate? Talk to Phill.

RayWhite

"Helpful & Beloved"  
"Nothing was a problem"  
"Easy to communicate with"  
"Lucky to have Phill  
as my agent"  
"Professional in all aspects"  
"Just a down to earth,  
normal guy"

**Phill Rivers**  
0276 109 090  
Licensee Salesperson



Chris Hogan  
Licensed Building Practitioner

## Carpenter Builder

csehogan31@gmail.com

027 204 3905

Rotorua  
New Zealand

Advertising Space Available Here

Contact: Karen Bedingfield

bedingfieldk@kaitao.school.nz

Ph: 07 348 3687 extn 705

Advertising Space Available Here

Contact: Karen Bedingfield

bedingfieldk@kaitao.school.nz

Ph: 07 348 3687 extn 705

Advertising Space Available Here

Contact: Karen Bedingfield

bedingfieldk@kaitao.school.nz

Ph: 07 348 3687 extn 705

## Advertising Space Available!

**CONTACT US**

We are now looking for advertisers for this year's newsletters.

Advertisement spaces are available on the back page of our newsletter which goes out fortnightly to all our students whanau via hard copy and e-mail.

Advertising space is 9cm x 6cm.

The cost is only \$25 per term per space so contact us today to secure your space.

Contact Karen on

348 3687 ext. 705 or

Email; bedingfieldk@kaitao.school.nz